

Huskie Transmission Tools Catalog



Huskie
TOOLS

When you think Transmission, Think Huskie

Our mission at Huskie is to supply the finest conductor connecting, cutting tools and related products to the transmission and distribution markets. Huskie products are safe and dependable state-of-the-art tools. All of our products carry an unconditional guarantee to be free from defects and to perform as advertised. Customer service is our main focus. We are proud to stand behind our hassle-free merchandise return policy. We at Huskie maintain a large back-up parts supply, which is supported by our in-house repair facility. An engineer is always available for troubleshooting during normal business hours. Our customer service agents are readily available to answer questions and we provide field support to all of our outside representatives.

At Huskie we strive to create an environment of trust, integrity, teamwork, and mutual respect when dealing with each other and our customers.

Owner

Tom Strick

Model EP-60W (Steel), EP-60WT (Titanium)

60 Ton Single Acting Compression Head



Accepts "HA60-SERIES" Type Dies
• See Page 23 of this booklet
for Available Huskie Dies

Specifications	
Output	60 Ton
Weight	45 lbs. (Steel) 33 lbs. (Titanium)
Size	6"W x 17"H
Cable Capacity	2.4" O.D.
Die Style	HA60-Series
Ram Stroke	1.5" Travel
Oil Volume	312 cc

Connector Range	
Lugs	Up to 2000 MCM Cu/Al
Splices	Up to 2500 MCM Cu/Al

Order Data	
EP-60W	60 Ton Single Acting Compression Head
EP-60WT	Titanium Model

Features	
• Designed for ACSR & ACAR Transmission and Distribution Cable	
• Lightest 60 Ton Presses in the Industry	
• Removable Die Caps for Easy Cable Insertion	
• Ultra Light Titanium Model Available	

The **EP-60W** is a single acting, 60 ton press that is designed to compress sleeves and lugs on ACSR and ACAR transmission and distribution cables. It is also ideal for substation construction and are operable from any 10,000 psi pumping source with proper oil capacity. These tools are made to be portable for easy maneuverability, unlike other brands.

The EP-60W series will readily accept any shell type dies currently used with Alcoa or Burndy 60 ton presses. Dies not listed can be made to specification; consult Huskie for more information.

Huskie also offers the lightest 60 ton presses in the industry. The EP-60W series is also offered in Titanium. Titanium has the strength of steel but weighs nearly 30 percent less. Due to its lighter weight and the tool's portable design, the chance of back and muscle strain is greatly reduced. The titanium 60 ton press is easily maneuvered where heavy steel presses are almost impossible to operate, making it an ideal tool for jobs such as helicopter line installations.

For even more portability, couple this press with our battery-operated REC-P1, 10,000 psi pump. See page 10 for unit and crimping estimate.

NOTE: When using any of these high-pressure tools, always use 10,000 psi rated non-conductive hose (NC-16 series).

Model EP-610H

15 Ton Remote Compression C-Head – 2" Jaw Opening

Accepts "P" Type Dies

- See Page 22 of this booklet for Available Huskie Dies

Specifications

Output	15 Ton
Weight	14.5 lbs.
Length	14.5"
Jaw Opening	2" (1.5" with "U" Die Adapter)

Connector Range

Aluminum	#8 AWG-1250 MCM
Copper	\$8 AWG-1500 MCM

Optional Accessories

PU-15	"U" Die Adapter, p. 92
-------	------------------------

- Also Available for T&B Style 15 Ton Dies (Model EP-610TB)



The **EP-610H** is a remote C-head that requires an external 10,000 psi pumping source. It accepts all Huskie HT61 series and Burndy "P" type dies used in the Y-46. When used with a Huskie PU-15 die adapter it will accept all "U" type dies used with any 12 ton tool. This tool is primarily used for cables above 750 MCM or in cases where additional tonnage is required to compress larger lugs, terminals and sleeves on tension connections. The EP-610H is supplied with a 3/8" male, screw type coupler and carrying case.

For even more portability, couple this press with our battery-operated REC-P1, 10,000 psi pump. See page 10 for unit and crimping estimate.

NOTE: When using any of these high-pressure tools, always use 10,000 psi rated non-conductive hose, (NC-16 series).

- Available upon request
EP-610HN insulated head



Model EP-60D (Steel), EP-60DT (Titanium)

60 Ton Double Acting Compression Head

Accepts "HA60-SERIES" Type Dies
• See Page 23 of this booklet
for Available Huskie Dies



Specifications

Output	60 Ton
Weight	47 lbs. (Steel) 34 lbs. (Titanium)
Size	6"W x 17"H
Cable Capacity	2.4" O.D.
Die style	HA60-Series
Ram Stroke	1.5" Travel
Oil Volume	303 cc

Connector Range

Lugs	Up to 2000 MCM Cu/Al
Splices	Up to 2500 MCM Cu/Al

Order Data

EP-60D	60 Ton Double Acting Compression Head
EP-60DT	Titanium Model

Features

- Designed for ACSR & ACAR Transmission and Distribution Cable
- Double Acting Hydraulic Cylinder for Quicker Return Times
- Removable Die Caps for Easy Cable Insertion
- Ultra Light Titanium Model Available

The **EP-60D** series is a double acting model. Double acting tools will eliminate the possibility of the tool jamming. Double acting means hydraulically advancing the ram to build the proper tonnage, then the hydraulic pressure is reversed to retract the ram. This will ensure the ram will retract without having to pry the jaws apart to release them and it will also retract much faster than single acting spring release tools.

Huskie also offers this tool in Titanium. Titanium has the strength of steel but weighs nearly 30% less. Due to its lighter weight and the tool's portable design, the chance of back and muscle strain is greatly reduced. The titanium 60 ton press is easily maneuvered where heavy steel presses are almost impossible to operate making it an ideal tool for jobs such as helicopter line installations.

NOTE: When using any of these high-pressure tools, always use 10,000 psi rated non-conductive hose (NC-16 series).

Model EP-100WB, EP-200WA

100 Ton & 200 Ton Compression Heads

EP-100WB Accepts "HA100-SERIES"
Type Dies

• See Page 23 of this booklet
for Available Huskie Dies

Specifications EP-100WB

Output	100 Ton
Weight	96 lbs.
Size	7-1/2"W x 14"H
Die Style	HA100-Series
Ram Stroke	.98" Travel
Oil Volume	314 cc

Specifications EP-200WA

Output	200 Ton
Weight	190 lbs.
Size	14"W x 17"H
Die Style	HA200-Series
Ram Stroke	1.57" Travel
Oil Volume	1134 cc

Features

- Designed for Full Tension Transmission and Substation Connections
- Double Acting Hydraulic Cylinder for Quicker Return Times
- Lightest Weight Models in Their Class
- Removable Die Caps for Easy Cable Insertion



The **EP-100WB** and **EP-200WA** are 100 and 200 ton compression heads for full tension, transmission and substation connections and require an external 10,000 psi pumping source. Both compression heads are double acting and designed to operate from Huskie pump models R14EAD, HPG-4 or any 3/4 HP high-pressure, double acting pump with the proper oil capacity. Double acting means hydraulically advancing the ram to build proper tonnage, then the hydraulic pressure is reversed to retract the ram. This will eliminate all possibilities of the connector hanging up or the tool jamming. Both models have removable die caps for easy connector positioning and 3/8" screw-type couplers and both are the lightest weight in their class.

The **EP-100WB** accepts Huskie HA100 series dies and all dies currently used with Alcoa 100 ton compression heads.

The **EP-200WA** is the only 200 ton press on the market today. Dies for 200 ton presses are considered special application and must be engineered to the connector manufacturers specifications. Consult factory for these dies.

NOTE: When using any of these high-pressure tools, always use 10,000 psi rated non-conductive hose (NC-16 series).

Model SH-70M

35 Ton Hydraulic Steel Punch



The portable **SH-70M** punch was designed to punch holes through 1/2" mild steel, aluminum and copper. The punched hole size is 1/16" larger than your bolt size. A stripper guide extends on either side of the ram to strip the material after punching. This hand-held unit will operate from any 10,000 psi hydraulic pumping source.

Some uses include the punching of bus bars, tower iron, railing, I-beams and truck frames. Custom size punch and dies are available upon request. Oval and square sizes are also available. Consult factory for order information. The SH-70M and SH-70F comes complete with four sets of punch and die sizes for 3/8", 1/2", 5/8" and 3/4" bolts and carrying case.

NOTE: When using any of these high-pressure tools, always use 10,000 psi rated non-conductive hose (NC-16 series).

Specifications

Output	35 Ton
Weight	28 lbs.
Capacity	1/2" Thick Mild Steel
Max. Hole	13/16" Diameter
Dimensions	14" x 8" x 3.5"
Throat Depth	2.75"

Order Data

SH-70M	Steel Punch with Male Coupler
SH-70F	Steel Punch with Female Coupler

Features

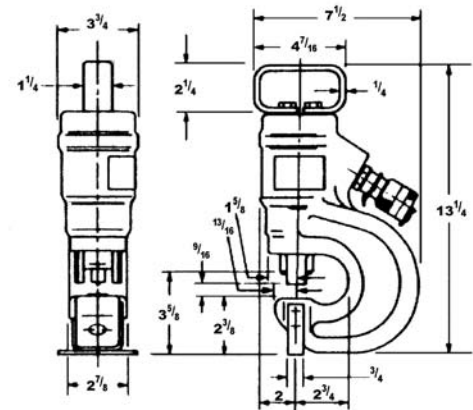
- Punches UP to 1/2" Mild Steel
- 13/16" Max Hold Diameter
- Will Punch: Oval, Round, Square, and Slotted Holes
- Custom Sizes Available
- Operates from a 10,000 psi Pump Source

Round Dies

ITEM	DESCRIPTION	BOLT SIZE
SHD-18	1/8" Punch & Die Set	
SHD-316	3/16" Punch & Die Set	
SHD-14	1/4" Punch & Die Set	
SHD-932	9/32" Punch & Die Set	
SHD-516	5/16" Punch & Die Set	
SHD-38	3/8" Punch & Die Set	
SHD-716	7/16" Punch & Die Set 10.5	3/8"
SHD-12	1/2" Punch & Die Set	
SHD-916	9/16" Punch & Die Set 13.5	1/2"
SHD-58	5/8" Punch & Die Set	
SHD-1116	11/16" Punch & Die Set 17.5"	5/8"
SHD-34	3/4" Punch & Die Set	
SHD-1316	13/16" Punch & Die Set 20.5	3/4"

Oblong Dies

ITEM	DESCRIPTION	BOLT SIZE
SHD-516X1316	5/16" X 13/16" Oblong Punch & Die Set	
SHD-38X1316	3/8" X 13/16" Oblong Punch & Die Set	
SHD-716X1316	7/16" X 13/16" Oblong Punch & Die Set	3/8"
SHD-12X38	1/2" X 3/8" Oblong Punch & Die Set	
SHD-12X34	1/2" X 3/4" Oblong Punch & Die Set	
SHD-12X1316	1/2" X 13/16" Oblong Punch & Die Set	
SHD-916X34	9/16" X 3/4" Oblong Punch & Die Set	1/2"
SHD-916X1316	9/16" X 13/16" Oblong Punch & Die Set	1/2"
SHD-58X1316	5/8" X 13/16" Oblong Punch & Die Set	
SHD-1116X1316	11/16" X 13/16" Oblong Punch & Die Set	5/8"
SHD-34X1316	3/4" X 13/16" Oblong Punch & Die Set	



Square Dies

ITEM	DESCRIPTION
SHD-14SQ	1/4" Square Punch & Die Set
SHD-38SQ	3/8" Square Punch & Die Set
SHD-716SQ	7/16" Square Punch & Die Set
SHD-12SQ	1/2" Square Punch & Die Set
SHD-1732SQ	17/32" Square Punch & Die Set
SHD-916SQ	9/16" Square Punch & Die Set

Hex Dies

ITEM	DESCRIPTION
SHD-716HEX	7/16" Hex Punch & Die Set
SHD-916HEX	9/16" Hex Punch & Die Set
SHD-1116HEX	11/16" Hex Punch & Die Set
SHD-1316HEX	13/16" Hex Punch & Die Set

Model SP-SERIES

Hydraulic Operated Remote Cutting Heads

The **SP-SERIES** remote head units connect to any 10,000 psi, high pressure, hydraulic pumping system. You can choose from seven different models. A 3/8" screw-type male coupler is supplied with each tool. The Huskie remote cutters have a hinged head which can be opened for easy cable or bar insertion. The movable blade advances in a shear fashion, to cut the material cleanly. When the cutting pressure is relieved an internal ram spring retracts the blade. The guillotine cutting style chosen over scissor type cutting because of its powerful output force, larger cable capacities, compact size and reliability.

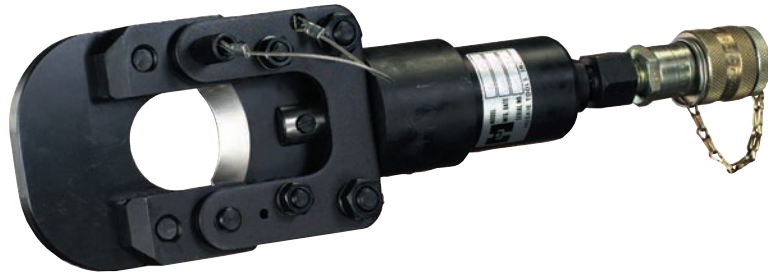
All tools can be used under water, consult factory for specific applications.

Specifications

	SP-40	SP-55
Output	6.28 Ton	13 Ton
Weight	26 lbs.	13.5"
Length	12"L	17"L
Jaw Opening	1.6"	2"
Capacities		
Wire Ropes	20mm	26mm
	3/4"	1"
Soft Steel Bolts	16mm	32mm
	5/8"	1-1/4"
Rebar, Ground & Anchor Rods	16mm	20mm
	5/8"	3/4"
Cu & Al Wire	40mm	50mm
	1-1/2"	2"
ACSR	40mm	50mm
	1-1/2"	2"
Standard Guy Wires	16mm	20mm
	5/8"	3/4"
Chain	Do Not Cut	Do Not Cut
Comm. Cables	Do Not Cut	Do Not Cut
Lead Sheath Cables	Do Not Cut	Do Not Cut

Model SP-40

Hydraulic Operated Remote Cutting Head



Model SP-55

Hydraulic Operated Remote Cutting Head



Model SP-32CC1 (Super Cutter)

Hydraulic Operated Remote Cutting Head

SP-32CC1 Capacities

Wire Ropes	Do Not Cut
Soft Steel Bolts	26mm
	1"
Rebar, Ground & Anchor Rods	26mm
	1"
Cu & Al Wire	Do Not Cut
ACSR	Do Not Cut
Standard Guy Wires	26mm
	7/8" EHS
Chain	1/2"
Comm. Cables	Do Not Cut
Lead Sheath Cables	Do Not Cut

Features

- Heavy Duty Head Design
- Easily Replaceable Blades
- Flip-Top Latch for Easy Insertion of Cutting Materials
- Will Cut Prestressed Strand up to 5/8"
- Solid bars to 11/16"
- Will Cut All High Tensile Strand Bolts, up to and including HI-TEN strand bolts (7/8")
- Will cut Reinforced bar to 15/16" strength 500 plus Rebar (Not suitable for 15/16" high strength, ribbed solid bar type chemical anchor bolts)
- Heavy-Duty Metal Storage Case Included



Specifications

Output	24 Ton
Weight	26 lbs.
Length	13.5"
Jaw Opening	1.25"

ACSR & All Aluminum Cable Cutting Reference Chart

Code Word	Size (AWG kcmil)	Stranding (Al/Stl)	Diameter (ins.)			
			Individual Wires		Steel Core	Complete Cable
			Al	Stl		
Turkey	6	6/1	0.0661	0.0661	0.0661	0.198
Swan	4	6/1	0.0834	0.0834	0.0834	0.25
Swanate	4	7/1	0.0772	0.103	0.103	0.257
Sparrow	2	6/1	0.1052	0.1052	0.1052	0.68
Sparate	2	7/1	0.0974	0.1298	0.1298	0.325
Robin	1	6/1	0.1181	0.1181	0.1181	0.354
Raven	1/0	6/1	0.1327	0.1327	0.1327	0.398
Quail	2/0	6/1	0.1489	0.1489	0.1489	0.447
Pigeon	3/0	6/1	0.1672	0.1672	0.1672	0.502
Penguin	4/0	6/1	0.1878	0.1878	0.1878	0.563
Waxwing	266.8	18/1	0.1217	0.1217	0.1217	0.609
Partridge	266.8	26/7	0.1013	0.1013	0.1013	0.642
Ostrich	300	26/7	0.1074	0.1074	0.1074	0.68
Merlin	336.4	18/1	0.1367	0.1367	0.1367	0.684
Linnet	336.4	26/7	0.1137	0.1137	0.1137	0.72
Oriole	336.4	30/7	0.1059	0.1059	0.3177	0.741
Chickadee	397.5	18/1	0.1486	0.1486	0.1486	0.743
Brant	397.5	24/7	0.1287	0.0858	0.2574	0.772
Ibis	397.5	26/7	0.1236	0.0962	0.2885	0.783
Lark	397.5	30/7	0.1151	0.1151	0.3453	0.806
Pelican	477	18/1	0.1628	0.1628	0.1628	0.814
Flicker	477	24/7	0.141	0.094	0.2819	0.846
Hawk	477	26/7	0.1354	0.1053	0.316	0.858
Hen	477	30/7	0.1261	0.1261	0.3783	0.883
Osprey	556	18/1	0.1758	0.1758	0.1758	0.879
Parakeet	556.5	24/7	0.1523	0.1015	0.3045	0.914
Dove	556.5	26/7	0.1463	0.1138	0.3413	0.927
Eagle	556.5	30/7	0.1362	0.1362	0.4086	0.953
Peacock	605	24/7	0.1588	0.1059	0.3177	0.953
Squab	605	26/7	0.1525	0.1186	0.3559	0.966
Wood Duck	605	30/7	0.142	0.142	0.426	0.994
Teal	605	30/19	0.142	0.0852	0.426	0.994
Kingbird	636	18/1	0.188	0.188	0.188	0.94
Swift	636	36/1	0.1329	0.1329	0.1329	0.93
Rook	636	24/7	0.1628	0.1085	0.3256	0.977
Grosbeak	636	26/7	0.1564	0.1216	0.3649	0.991
Scoter	636	30/7	0.1456	0.1456	0.4368	1.019
Egret	636	30/19	0.1456	0.0874	0.4368	1.019
Flamingo	666.6	24/7	0.1667	0.1111	0.3333	1
Gannet	666.6	26/7	0.1601	0.1245	0.3736	1.014
Stilt	715.5	24/7	0.1727	0.1151	0.3453	1.036
Starling	715.5	26/7	0.1659	0.129	0.3871	1.051
Redwing	715.5	30/19	0.1544	0.0927	0.4633	1.081
Coot	795	36/1	0.1486	0.1486	0.1486	1.04
Cuckoo	795	24/7	0.182	0.1213	0.3639	1.092
Drake	795	26/7	0.1749	0.136	0.408	1.834
Tern	795	45/7	0.1329	0.0886	0.2658	1.063
Condor	795	54/7	0.1213	0.1213	0.364	1.092
Mallard	795	30/19	0.1628	0.0977	0.4884	1.14
Ruddy	900	45/7	0.1414	0.0943	0.2828	1.131
Canary	900	54/7	0.1291	0.1291	0.3873	1.162
Rail	954	45/7	0.1456	0.0971	0.2912	0.67
Cardinal	954	54/7	0.1329	0.1329	0.3987	1.196
Ortolan	1033.5	45/7	0.1515	0.101	0.3031	1.212
Curlew	1033.5	54/7	0.1383	0.1383	0.415	1.245
Bluejay	1113	45/7	0.1573	0.1048	0.3145	1.258
Finch	1113	54/19	0.1436	0.0861	0.4307	1.292
Bunting	1192.5	45/7	0.1628	0.1085	0.3256	1.302
Grackle	1192.5	54/19	0.1486	0.0892	0.4458	1.337
Bittern	1272	45/7	0.1681	0.1121	0.3362	1.345
Pheasant	1272	54/19	0.1535	0.0921	0.4605	1.381
Dipper	1351.5	45/7	0.1733	0.1155	0.3466	1.386
Martin	1351.5	54/19	0.1582	0.0949	0.4746	1.424
Bobolink	1431	45/7	0.1783	0.1189	0.3566	1.427
Plover	1431	54/19	0.1628	0.0977	0.4885	1.465
Nuthatch	1510.5	45/7	0.1832	0.1221	0.3663	1.466
Parrot	1510.5	54/19	0.1672	0.1003	0.5015	1.505
Lapwing	1590	45/7	0.188	0.1253	0.3759	1.504
Falcon	1590	54/19	0.1716	0.103	0.5148	1.544
Chukar	1780	84/19	0.1456	0.0874	0.4368	1.602
Bluebird	2156	84/19	0.1602	0.0962	0.4808	1.762
Kiwi	2167	72/7	0.1735	0.1157	0.347	1.735



S-16



S-20



S-240

S-32



S-55



S-55

S-40B

Model REC-P1 ROBO*PUMP

10,000 psi Battery Powered 28.8 Volt Pump

Specifications

Output	10,000 psi
Weight	23 lbs. with 2 Batteries
Size	16"L x 6"H x 10"D

Crimping Estimates

	2 BP-70E
Using a 10 ft. Hose and EP-60W on 1272 ACSR	10+ crimps
No Load Cycle Time	Advance 25 Sec., Retract 30 Sec.



Features

- Powerful 28.8 Volt
- Operate Up to Single Acting 60 Ton Press
- Adjustable 10,000 psi
- Eliminates the Need for AC Power
- Compact and Portable

Model R-14EF

1/2 HP, 10,000 psi Hydraulic Pump

Specifications

Weight	34 lbs.
Size	7"L x 6"W x 14"H
Power Output	1/2 HP-6.5 Amp
Delivery @ 200 psi	157 cu/in/m
Delivery @ 10,000 psi	19 cu/in
Oil Capacity	120 cu/in (2 quarts)



Features

- Remote Operation Allows Full Operator Control
- Advance and Hold Feature Standard
- Manual Control Directly on Pump Motor
- Pressure Adjustment from 4,000-10,000 psi

Model R-14EA

3/4 HP, 10,000 psi Single Acting Hydraulic Pump

Specifications

Weight	75 lbs. with Oil
Size	14"L x 13.25"W x 16"H
Power Output	3/4 HP - 8.2 Amp
Delivery @ 300 psi	157 in ³ /min
Delivery @ 10,000 psi	36 in ³ /min
Oil Capacity	182 cu/in (3 quarts)



Features

- Remote Operation Allows Full Operator Control
- Manual and Automatic Mode for Additional Versatility
- 3/4 HP Rating
- Low Amperage Requirement

Model R-14EAD

3/4 HP, 10,000 psi Double Acting Hydraulic Pump

Features

- Remote Operation Allows Full Operator Control
- Manual and Automatic Mode for Additional Versatility
- Low Amperage Requirement



Specifications

Weight	75 lbs. with Oil
Size	14"L x 13.25"W x 16"H
Power Output	3/4 HP - 8.2 Amp
Delivery @ 300 psi	157 in ³ /min
Delivery @ 10,000 psi	36 in ³ /min
Oil Capacity	182 cu/in (3 quarts)

Model HPG-4

4 HP, Gas Engine 10,000 psi Hydraulic Pump



RC-5
Roll / Carry Cage
(Optional)



Specifications

Weight	74 lbs. with Oil
Oil Capacity	5 Gallons
Gas Tank	3 Pints
Max Pressure	10,000 psi
Power Output	4 HP
Oil Delivery @ 100 psi	480 in ³ /min
Oil Delivery @ 10,000 psi	55 in ³ /min

Features

- Four Way Valve Allows for Single or Double Acting Capacity
- Standard Screw Type Male and Female Couplers

Model NC-SERIES

10,000 psi High Pressure Hydraulic Hose



Features

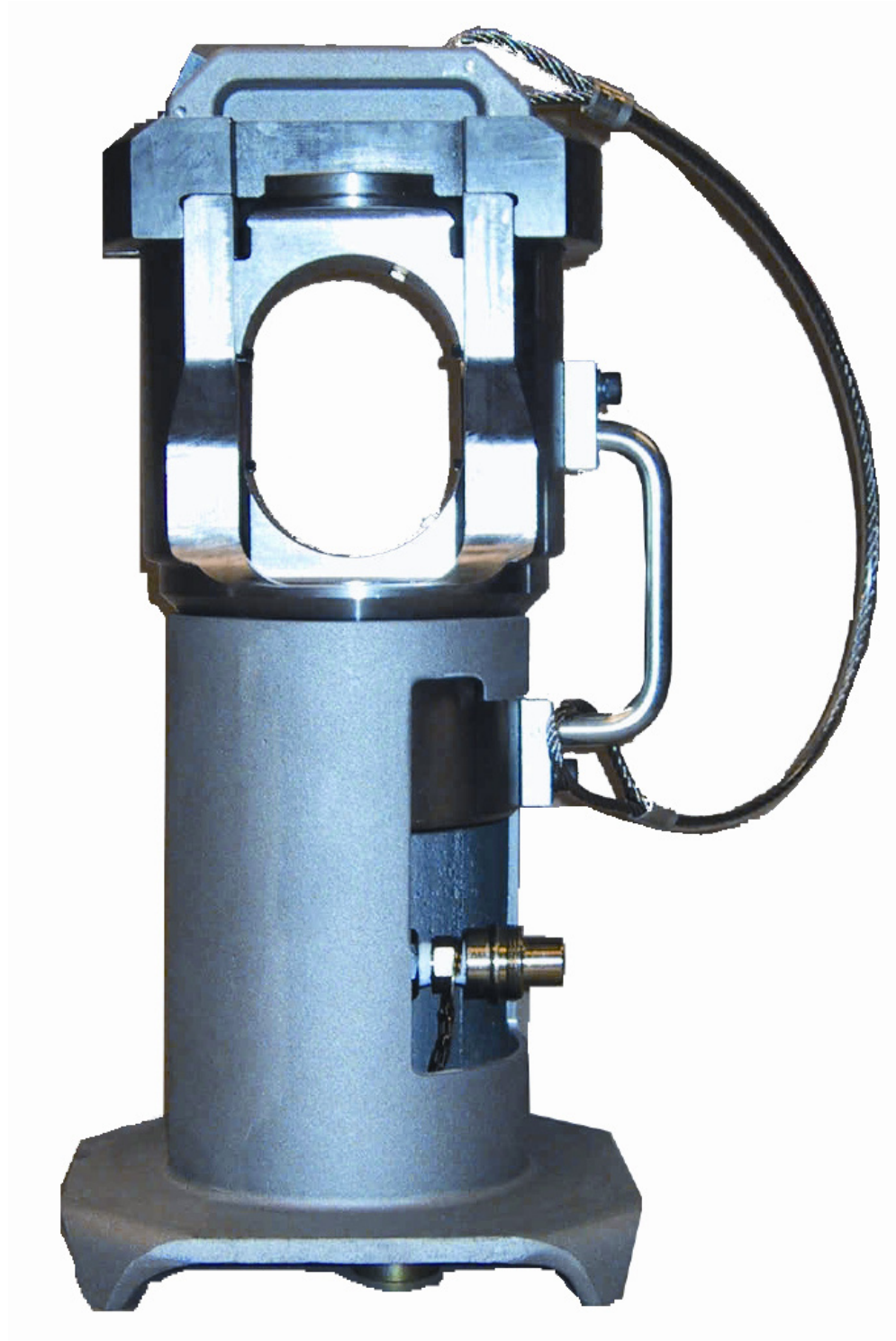
- Highly Visible Safety Orange (RB-1610 is Brown)
- Heavy Duty Shrink Wrap at Hose Ends for Reduced Risk of Leaking
- Date Coded at Point of Assembly

When you think Transmission,



Think Service

Think Quality



DID YOU KNOW that Huskie is the only manufacturer that makes a Titanium 60 ton press?

Think Huskie!!!

Model REC-S3550 ROBO*CUT™

13 Ton Battery Powered Cutter – 2" Jaw Opening

Specifications

Output	13 Ton
Weight	23 lbs. with Battery
Size	21.5"L x 10.5"H x 3.5"W
Jaw Opening	2"

Cutting Capacities

Wire Rope	1"
Soft Steel Bolts	1-1/4"
Rebar, Ground & Anchor Rod	3/4"
Cu & Al wire	2"
ACSR	2"
Standard Guy Wire	3/4"
Telephone & Lead Sheathed Cable	DO NOT CUT

Features

- Tested Up to 75kV
- Rotational Head
- Rapid Advance
- Ergonomically Balanced
- Weather Resistant Housing
- Overload Bypass Protection
- Most Powerful Battery Operated Cutter

*Due to material composition, the ratings are to be used as a guide. Actual capacity may vary due to "bypass" feature.



The **REC-S3550** cuts ACSR, guy wire, wire rope, and ground rod. Powerful and portable with a 2" jaw opening. A latch-type jaw swings open to accept material to be cut. The head can be rotated for proper positioning of rod or cable. This is our most versatile cutter patterned after our S-55 hand operated cutter.

NOTE: WILL CUT ALL 795 ACSR CABLE, INCLUDING DRAKE.

ACSR Cutting Guide

Use Huskie S-55, SP-55 or REC-S3550 For These Cable Sizes

ACSR Code	Cir. Mills or A.W.G.	ACSR Code	Cir. Mills or A.W.G.	Material	Size
Crane	874	Finch	1113	Standard Guy Wires	3/4"
Canary	900	Pheasant	1272	Bolt	7/8"
Cardinal	954	Plover	1431	Ground Rod	3/4"
Curlew	1033	Falcon	1590		



Use Huskie REC-S540 For These Cable Sizes

ACSR Code	Cir. Mills or A.W.G.	ACSR Code	Cir. Mills or A.W.G.	Material	Size
Flamingo	666	*Drake	795	Standard Guy Wires	5/8"
Crow	715	Condor	795	Bolt	5/8"
Starling	715	Mallard	795	Ground Rod	3/4"
Redwing	715				



*Use Huskie REC-3550, S-55 or SP-55 to cut Drake Cable!

Use Huskie REC-54 For These Cable Sizes

ACSR Code	Cir. Mills or A.W.G.	ACSR Code	Cir. Mills or A.W.G.	ACSR Code	Cir. Mills or A.W.G.	ACSR Code	Cir. Mills or A.W.G.
Turkey	6	Owl	266	Lark	397	Peacock	605
through		Partridge	266	Pelican	477	Squab	605
Robin	1	Ostrich	300	Flicker	477	Teal	605
Raven	1/0	Merlin	336	Hawk	477	Rook	636
Quail	2/0	Linnet	336	Hen	477	Grosbeak	636
Pigeon	3/0	Oriole	336	Parakeet	556	Egret	636
Penguin	4/0	Chickadee	397	Dove	556	DO NOT CUT Guy Wire,	
Waxwing	266	Ibis	397	Eagle	556	Ground Rod or Bolts	



Model REC-3610 ROBO*CRIMP™

15 Ton Battery Powered Compression Tool – 2" Jaw Opening

Accepts "P" Type Dies

• See Page 22 of this booklet for Available Huskie Dies



Specifications

Output	15 Ton
Weight	24 lbs. with Battery
Size	21.5"L x 10.5"H x 3.5"W
Jaw Opening	2"

Crimping Estimates

	BP-70E
1000 MCM Cu	30

Connector Range

Aluminum	#8 AWG-1250 MCM
Copper	#8 AWG-1500 MCM
H-Tap	Up to 750/750

Optional Accessory

PU-15	"U" Die Adapter, p.92
-------	-----------------------

Features

- Tested Up to 75kV
- Rotational Head
- Rapid Advance
- Ergonomically Balanced
- Weather Resistant Housing
- Audible Bypass when Predetermined Pressure is Achieved
- Includes DIE-CASE
- Protective Rubber Boot on Head
- Flip-Top Rotating Head
- External Pressure Adjustment

The **REC-3610** is our 15 ton compression tool that is able to crimp splices and lugs up to 1250 MCM aluminum and 1500 MCM copper. The REC-3610 offers a wide handle opening with finger grooves, allowing easy access for gloved work.

The base of the tool is contoured for stability and incorporates finger grooves for a better grip. The tool has a latched head and its pull-out release pin cannot be entirely removed from the jaw. The jaw opens wide to accept all "P" type dies used in the industry today. The PU-15 die adapter is available for use with all 12 ton "U" type dies.

Model REC-5ND ROBO*CRIMP™

6 Ton Battery Powered Compression Tool – 1-3/8" Jaw Opening

REC-5ND Features

- One Hand Operation
- Tested Up to 75kV
- Rotational Head
- Rapid Advance
- Ergonomically Balanced
- Ergonomic Pistol Grip Handle
- Weather Resistant Housing
- Audible Bypass when Predetermined Pressure is Achieved
- 4 Compression Heads to Choose From



Accepts "W", "O" and "X" Type Dies

- See Page 22 of this booklet for Available Huskie Dies

Die compatibility varies by jaw.

The **REC-5ND** was designed with a snub-nose single groove jaw that has a D3 nest die and will accept "O" type dies. It is used to crimp commonly used service entrance connectors, including lugs, sleeves, H-Taps and C-taps. The snub nose design is physically smaller than the wooden handled tools, which is ideal for tight quarters, and the compression head rotates more than 350° for operator convenience.

In addition to the rapid advance feature incorporated into the new REC-5ND, it also has an electronic counter that allows a service technician to read the number of compression cycles the tool has made. Also, the new tool housing has been reinforced to improve durability during heavy field use.

The **REC-5ND** can use any of the crimping heads featured on the next page.

Model ECO-ND ROBO*CRIMP™

6 Ton Battery Powered Compression Tool – 1.4" Jaw Opening



Accepts "W", "O" and "X" Type Dies

- See Page 22 of this booklet for Available Huskie Dies

Die compatibility varies by jaw.

The battery-driven open jaw **ECO-ND** compression tool is an economically priced version of the REC-5ND.

The key differences are:

- *It completes its crimps slower than the REC-ND
- *It only has a 3 year warranty, The REC-5ND has a 5 year warranty

The **ECO-ND** can use any of the crimping heads featured on the next page.

REC-5ND & ECO-ND Specifications

Output	6 Ton
Weight	9 lbs. with Battery
Size	14"L x 12"H x 2.5"W
Jaw Opening	1-3/8"

Crimping Estimates

	BP-70E
#6 Cu/Al	210
1/0 Cu/Al	160
4/0 Cu/Al	125

Connector Range

Lugs and Splices	#8-500 MCM Cu #8-300 MCM Al
H-Taps	Up to 4/0-4/0

Optional Accessories

ND-JAWN, O-JAWN, and BG-JAWN	Brush Contact Insulated Jaws
HT58CUT	Cutter Die, p. 60

ECO-ND Features

- One Hand Operation
- Tested Up to 75kV
- Rotational Head
- Visible Orange Housing
- Ergonomic Pistol Grip Handle
- Weather Resistant Housing
- Audible Bypass when Predetermined Pressure is Achieved
- Economically Priced

Model ECO-EZ ROBO*CRIMP™

6 Ton Battery Powered Streamline Compression Tool

Accepts "W", "O" and "X" Type Dies
• See Page 22 of this booklet for Available Huskie Dies

Die compatibility varies by jaw.



EZND

D3 Nest Die (no nose die) Snub Nose. Accepts "W" Style Dies.



EZK

Takes Kearney "O" Type Dies. Does NOT Accept "W" Style Dies.



EZO

D3 Nest Die with "O" Nose built-in. Accepts "W" Style Dies.



EZBG

D3 Nest Die with "BG" Nose built-in. Accepts "W" Style Dies.

Specifications

Output	6 Ton
Weight	6.75 lbs. with Battery
Length	20.5"

Crimping Estimates

	BP-70E
4/0-4/0 H-Tap	80

Connector Range

Lugs and Splices	#8-500 MCM Cu #8-300 MCM Al
H-Taps	Up to 4/0-4/0

Optional Accessories

ND-JAWN, O-JAWN, and BG-JAWN	Brush Contact Insulated Jaw
HT58CUT	Cutter Dies, p. 60

Features

- One Hand Operation
- Tested Up to 75kV
- Rotational Head
- Visible Orange Housing
- Weather Resistant Housing
- Audible Bypass when Predetermined Pressure is Achieved
- Economically Priced
- Four Compression Heads to Choose From
- Streamlined
- Lightweight
- Compatible With All Huskie 14.4V Batteries

The **ECO-EZ** Streamline compression tool has a powerful 6 ton output. When ordering, choose from any of the four available heads that meet your needs. The swivel head design allows the jaws to rotate more than 180° for operator convenience.

No need for another battery system. This tool operates on the same 14.4 volt battery used in all of the Huskie Robo tools. Just like the rest of our battery tools, energized lines will not affect the operation or performance of the tool. The new ECO-EZ Streamline tool carries a 3 year warranty on the tool and a 5 year warranty on the batteries.



Our (optional) Streamline tool Holster

Catalog # EZ-HLSTR

Model REC-S540 ROBO*CUT™

8 Ton Battery Powered Cutter – 1.6" Jaw Opening



*See Page 14 in this booklet for this tool's ACSR cutting guide

Specifications

Output	8 Ton
Weight	14.6 lbs. with Battery
Size	17.5" L x 12.5" H x 2.5" W
Jaw Opening	1.6"

Cutting Estimates

BP-70E

795 ACSR 50

3/4" Wire Rope 75

5/8" Rebar 50

5/8" Ground Rod 50

3/8" Guy Wire 35

Cutting Capacities

Wire Rope 3/4"

Rebar (Sc 40) 5/8"

Rebar (Sc 60) 5/8"

Ground Rod 5/8"

ACSR 1590 MCM

Guy Wire 5/8"

Cu/Al Cable 1.5"

The **REC-S540** is designed to cut up to 1590 ACSR and regular guy wires and ground rod up to 5/8". The REC-S540 features a two stage, rapid advance ram for reduced cycle times.

This cutter is made for one-handed operation. Simply remove the pin latch, place over cable, reinsert pin, and cut. A built-in bypass will pop off if the material is beyond the cutter's capacity. It is not recommended to cut hardened steel.

NOTE: DO NOT CUT EHS GUY WIRE OR CASE HARDENED STEEL RODS. SEE REC-S524CC, S-24CC, SP-24CC, S-32CC OR SP-32CC1.

Model REC-54 ROBO*SLICE™

Battery Powered Gear-Driven Cable Cutter with Notched Blade – 2-1/8" Jaw Opening

Specifications

Weight 7.2 lbs. with Battery

Size 16"H x 4"L x 4.5"W

Jaw Opening 2-1/8"

Cutting Estimates

BP-70E

636 ACSR 50

Cutting Capacities

Copper Consult Factory*

Aluminum Consult Factory*

ACSR 636 MCM



*See Page 14 in this booklet for this tool's ACSR cutting guide

The **REC-54** is a heavy duty cable cutter used to cut ACSR up to 636, and limited sizes of copper and aluminum cable. Huskie has notched both cutting blades to avoid the denting of the cutting surfaces when steel strand is encountered.

This tool also incorporates a blade retainer, which keeps the blades from spreading apart while cutting steel cables. The REC-54 was designed for single and multi-stranded steel cores and aluminum cables. It will not cut ground rods or thick steel stranded guy wires.

It features a lock-out switch for reversing the blade, all with one-handed operation. The powerful gear drive allows the operator to cut through the toughest cables with just the pull of the trigger.

NOTE: The REC-54 will not cut guy wires, ground rod or bolts.

Batteries

High Capacity Replacement Batteries

When you buy Huskie, there is never a need to guess what battery you need since our tools have a standardized battery platform.

Any Huskie battery will work in any Huskie tool.



BP-70E



BP-70EI

The **BP-70E** is the standard replacement battery for all ROBO tools. It is a high capacity 1.9 Ah Ni-Cd battery with a life expectancy of 1000 recharges. This battery replaces the original BP-70R and offers 30% more cycles per charge. Actual cycles per charge will vary depending on the type and size of the material being cut or compressed.

The **BP-70EI** "Smart" battery is the same as the standard BP-70E with the addition of a LED display that will indicate its power capabilities for you. The BP-70EI is self evaluating which allows the user to monitor the status of the battery's total life and power in between charges. Charge time is approximately 25 minutes for a fully depleted battery. Both 14.4 volt batteries are interchangeable with all Huskie ROBO products.

The battery's capacity is shown with a LED indicator of five red lights on its side. Different light patterns shown in the instruction manual, will give the user specific battery information. For instance, when the bottom red light begins to flash, it is a warning that only 10% of the battery power remains and it must be recharged soon. You'll know that the battery is fully charged if you push the "check" button and all five lights turn on. To check battery recharge cycles, depress "check" button once, release, and depress again while LED lights are on, and hold approximately 10 seconds until LED pattern is displayed. The LED Indicator on the BP-70EI battery carries a 1 year warranty from purchase date.

NOTE: ROBO batteries are extremely powerful and care should be taken to avoid shorting out the terminals. All LED lights will flash if the battery has internal problems. If this occurs, the battery must be returned to the factory for evaluation.

Features

- Up to 1000 Recharge Cycles
- High Capacity 1.9 Ah
- LED Indicator (BP-70EI Only)
- 14.4 Volt
- 5 Year Warranty (LED= 1 Year Warranty)



BP-70MH

The **BP-70MH** is a nickel metal hydride battery that has an ultra high capacity of 2.9 Ah, 30% greater run time than the BP-70E. It is distinguished by the blue rim on the top cap. Charge time is approximately 35 minutes on a fully depleted battery.

Features

- Up to 1000 Recharge Cycles
- High Capacity 2.9Ah Battery
- 14.4 Volt
- 5 Year Warranty

Model CH-35R

Standard 25 Minute Quick Charger

Features

- 25 Minute Recharge on High Capacity BP-70E and BP-70EI Batteries
- Reconditioning Cycle



The **CH-35R** is the newest addition to the ROBO lineup of battery chargers. It is designed to charge the new high capacity BP-70E and BP-70EI batteries in 25 minutes. It will also charge the BP-70R and BP-70I batteries in just 15 minutes and the BP-70MH in 35 minutes and has a reconditioning cycle.

The CH-35R charger has an optional refresh cycle built in to discharge then recharge the battery, to eliminate "memory" effect and return the battery to its optimal performance. This cycle could take a maximum time of 10 hours to complete on a fully charged battery, but considerably less on a partially discharged battery. This cycle can be used anytime the operator feels the battery is losing performance or the number of cycles per charge is decreasing.

**This charger will not charge the BP-80.*

MODEL CH-70DCH

12 Volt DC Charger

Features

- Automotive Style Plug End
- 90 Minute Recharge on High Capacity BP-70E and BP-70EI Batteries



The **CH-70DCH** is a 12 volt DC charger with charge times of 1 hour for the BP-70R and BP-70I, 90 minutes for the BP-70E and BP-70EI and 2 hours for the BP-70MH. It can be plugged directly into an automotive cigarette lighter and has a built in overload fuse protector.

Although the charger is composed of a lightweight printed circuit, the battery drain on an automotive system is considerable and the engine should be running while the battery is being charged. We do not recommend battery charging while the engine is off. The battery should be secure while the vehicle is in motion to avoid it from bouncing out of the charger.

**This charger will not charge the BP-80.*

Introducing Huskie's Utility Grade Lithium-Ion System



BP-80 Features

- High Capacity 3.0Ah Battery Pack
- Lightweight Battery Pack
- Impact Resistant Housing
- The Performance is Minimally Affected by Extreme Temperatures
- Minimal Self-Discharge
- No Memory Effect
- Non-Hazardous Chemistry/Environmentally Safe
- Considerably Longer Run Times as Compared to NiCad, NiMH
- Recyclable with the RBRC Recycling Program
- 5 Year warranty

CH-80 Features

- Tri-Chemistry Charger Able to Charge All Huskie Batteries (Li-Ion, NiCad, and NiMH)
- Charger Has a Conditioning Feature to Accommodate NiCad and NiMH Memory Effect
- Top-Off and Maintenance Trickle Charge for NiCad and NiMH Batteries
- UL/CUL Agency Approvals
- Monitors Battery Temperature and Battery Voltage for Correct Charging and Battery Faults
- 5 Year warranty

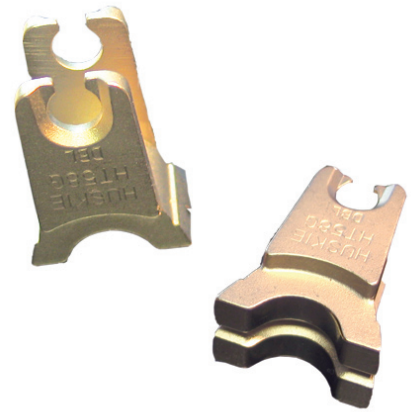
The **BP-80** and **CH-80**, are the core of Huskie's new Utility-Grade Lithium-Ion System. Our System is the only Lithium-Ion battery and charger developed specifically for the utility industry and its unique needs.

We are offering a battery & charging system, that is nothing like anything you can buy off the shelf. The tools in your industry are much different than the tools at your local hardware store. We believe your battery system should be the same way .

Model HT58-SERIES

Equivalent to Burndy "W" Type Dies for 4-6 Ton Tools

HUSKIE	BURNDY	HUSKIE	BURNDY	HUSKIE*	BURNDY*
HT58AE	W-K840	HT58DE	W-236		
HT58BX	W-161	HT58DG	W-238	HT58AW	W-2CRT
HT58BZ	W-162	HT58DH	W-239	HT58AU	W-4CRT
HT58CB	W-163	HT58DK	W-241	HT58AT	W-5CRT
HT58CD	W-164	HT58DM	W-243	HT58AY	W-25RT
HT58CE	W-165	HT58DP	W-245	HT58AZ	W-26RT
HT58CF	W-166	HT58DT	W-247	HT58BA	W-27RT
HT58CG	W-167	HT58DV	W-248	HT58BC	W-28RT
HT58CM	W-171	HT58DW	W-249	HT58BE	W-29RT
HT58G	W-BG	HT58DZ*	W-251*	HT58BF	W-30RT
HT58J	W-C	HT58KA	W-687	HT58BJ	W-31RT
HT58AK	W-O	HT58KH	W-702	HT58BK	W-32RT
HT58CUT	CUTTER	HT58AF	W-L	HT58BL	W-34RT

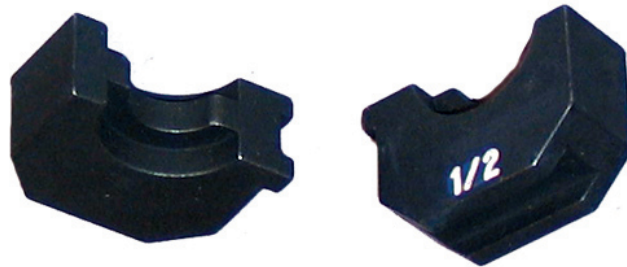


*Available Mid-2009

Model HT-SERIES

Equivalent to Kearney "O" Type Dies for 4-6 Ton Tools

HUSKIE	KEARNEY	HUSKIE	KEARNEY
HT-B	B	HT-510	510 (HEX)
HT-D	D	HT-635	635 (HEX)
HT-D3	D3	HT-747	747 (HEX)
HT-J	J	HT-316	3/16
HT-K	K	HT-14	1/4
HT-O	O	HT-516	5/16
HT-P	P	HT-38	3/8
HT-T	T	HT-12	1/2
HT-737	737	HT-916	9/16
HT-781	781	HT-1932	19/32
HT-840	840	HT-58-1	5/8-1
HT-845	845	HT-1116	11/16



Model HT61-SERIES

Equivalent to Burndy "P" Type Dies for 15 Ton Tools

HUSKIE	BURNDY	HUSKIE	BURNDY
HT61BP	P39RT	HT61FC	P39ART
HT61BR	P40RT	HT61HJ	P40ART
HT61BU	P44RT	HT61FD	P44ART
HT61BV	P46RT	HT61AC	PKR
HT61KX	P-724	HT61AJ	PN
PU-15	DIE ADAPTER		



Model HA60-SERIES

Equivalent to Alcoa 60 Ton Dies



HUSKIE	ALCOA	HUSKIE	ALCOA
HA60-01	6010SH	HA60-27	6040AH
HA60-02	6012SH	HA60-28	6074AH
HA60-03	6014SH	HA60-29	6075AH
HA60-04	6016SH	HA60-30	6076AH
HA60-05	6018SH	HA60-40	6007CD
HA60-06	6020SH	HA60-41	6008CD
HA60-07	6074SH	HA60-42	6009CD
HA60-08	6075SH	HA60-43	6010CD
HA60-09	6076SH	HA60-44	6011CD
HA60-20	6020AH	HA60-45	6012CD
HA60-21	6024AH	HA60-46	6013CD
HA60-22	6027AH	HA60-47	6014CD
HA60-23	6030AH	HA60-48	6015CD
HA60-24	6034AH	HA60-49	6016CD
HA60-25	6036AH	HA60-50	6017CD
HA60-26	6038AH		

Model HA100-SERIES

Equivalent to Alcoa 100 Ton Dies



HUSKIE	ALCOA	HUSKIE	ALCOA	HUSKIE	ALCOA
HA100-01	10010SH	HA100-24	10034AH	HA100-41	10010CD
HA100-02	10012SH	HA100-25	10036AH	HA100-42	10009CD
HA100-03	10014SH	HA100-26	10038AH	HA100-43	10010CD
HA100-04	10016SH	HA100-27	10040AH	HA100-44	10011CD
HA100-05	10018SH	HA100-28	10074AH	HA100-45	10012CD
HA100-06	10020SH	HA100-29	10075AH	HA100-46	10013CD
HA100-07	10074SH	HA100-30	10076AH	HA100-47	10014CD
HA100-08	10075SH	HA100-34	10042AH	HA100-48	10015CD
HA100-20	10020AH	HA100-36	10044AH	HA100-49	10016CD
HA100-21	10024AH	HA100-37	10046AH	HA100-50	10017CD
HA100-22	10027AH	HA100-38	10048AH	HA100-51	10018CD
HA100-23	10030AH	HA100-40	10007CD	HA100-52	10019CD
				HA100-53	10020CD

If you have any questions, please
don't hesitate to contact us at
1-800-860-6170.
We look forward to your call

When you think Transmission, Think Quality, Think Service
Think Huskie

Huskie Tools Inc.
198 N. Brandon Dr.
Glendale Heights, IL. 60139
(800) 860-6170

